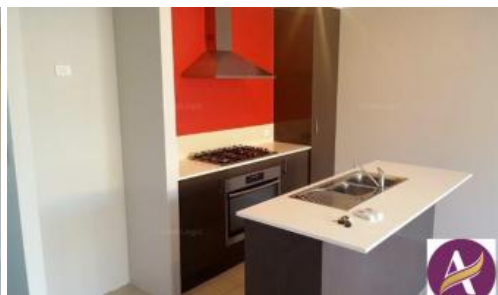


Leased



39 Birch Road, Aubin Grove



## UNDER APPLICATION

Located in the Carmel Rise estate, with a beautiful park and shops just around the corner, 5 minutes to the new Aubin Grove train station and easy access to Kwinana Freeway

Great location with a short drive to local parklands, local shops, transport links, Train Station and local schools, Gateways Shopping Centre, and Kwinana Freeway.

Features include:

4 Bedrooms

2 Bathrooms

Master bedroom with – en-suite

Kitchen with dishwasher

Open plan meals / family area

3 Split system reverse cycle air-conditioners

Minor bedrooms at the back of the house away from master bedroom

Remote controlled double garage

Easy care backyard/patio area

🛏️ 4 🚿 2 🚗 3 📏 299 m2

**Price** \$480 per Week

**Property Type** Rental

**Property ID** 252

**Land Area** 299 m2

**Floor Area** 123 m2

### Agent Details

James Papas - 0414824888

### Office Details

Avante' Real Estate

08 9414 6818



Close to parks

Small pets considered.

Please register your interest with James on 0414 824 888 or email at [admin@avantere.com.au](mailto:admin@avantere.com.au), viewings from

This information has been prepared for advertising and marketing purposes only. It is believed to be reliable and accurate, but prospective tenants must make their own independent inquiries and must rely on their own personal judgement about the information included in this document. Avante' Real Estate provides this document without any express or implied warranty as to its accuracy. Any reliance placed upon this document is at the tenant's own risk. Avante' Real Estate accept no responsibility for the results of any actions taken, or reliance placed upon this document by a tenant.

The above information provided has been furnished to us by the vendor/s. We have not verified whether or not that information is accurate and do not have any belief in one way or the other in its accuracy. We do not accept any responsibility to any person for its accuracy and do no more than pass it on. All interested parties should make and rely upon their own inquiries in order to determine whether or not this information is in fact accurate.